

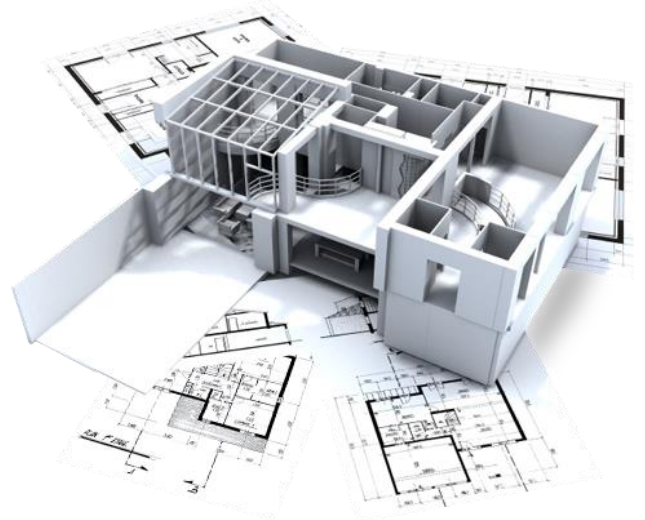
2023-2024 AKADEMİK
YILI / Academic Year

EĞİTİMDE KALİTE GÜVENCESİ GÜZ DÖNEMİ RAPORU

*QUALITY ASSURANCE IN
EDUCATION FALL SEMESTER
REPORT*

**GÜZEL SANATLAR, TASARIM VE
MİMARLIK FAKÜLTESİ**
*FACULTY OF ART, DESIGN AND
ARCHITECTURE*

MİMARLIK LİSANS PROGRAMI (ARCH)
*ARCHITECTURE UNDERGRADUATE PROGRAM
(ARCH)*



İÇİNDEKİLER / CONTENTS

1. LİSANS PROGRAMI / UNDERGRADUATE PROGRAM	2
1.1. MÜFREDAT / CURRICULUM.....	2
2. PROGRAM ÇIKTILARI / PROGRAM OUTCOMES	4
2.1. PROGRAM ÇIKTILARININ LİSTESİ / LIST OF PROGRAM OUTCOMES	4
2.2. PROGRAM ÇIKTILARI - DERSLER MATRİSİ / PROGRAM OUTCOMES - COURSES TABLE	6
3. PERFORMANS ÖLÇÜMLERİNDE KULLANILACAK METRİKLER / METRICS TO BE USED IN PERFORMANCE MEASUREMENT	7
3.1. PERFORMANS ÖLÇÜMLERİNDE KULLANILACAK DEĞERLENDİRME METOTLARI / EVALUATION METHODS USED IN PERFORMANCE MEASUREMENTS	7
3.2. PERFORMANS ÖLÇÜMLERİNDE KULLANILAN METOTLAR VE PERFORMANS SONUÇ DETAYLARI / METHODS USED IN PERFORMANCE MEASUREMENTS AND PERFORMANCE RESULT DETAILS	19
3.3. PERFORMANS ÖLÇÜM SONUÇLARI / PERFORMANCE MEASUREMENT RESULTS	27
3.3.1. PROGRAM ÇIKTILARI PERFORMANS TABLOSU / PROGRAM OUTCOMES PERFORMANCE TABLE	27
3.3.2. PROGRAM ÇIKTILARI PERFORMANS ORANLARI / PROGRAM OUTCOMES PERFORMANCE RATES	28

GÜZEL SANATLAR, TASARIM VE MİMARLIK
FAKÜLTESİ / FACULTY OF ART, DESIGN AND ARCHITECTURE
MİMARLIK LİSANS PROGRAMI - ARCH / ARCHITECTURE
UNDERGRADUATE PROGRAM - ARCH

1. LİSANS PROGRAMI / UNDERGRADUATE PROGRAM

1.1. MÜFREDAT / CURRICULUM

Birinci Yıl / First Year					
Güz Dönemi / Fall Semester					
Ders Kod / Course Code	Ders Adı / Course Name	Saatler / Hours		Kredi / Credits	
		Ders / Lecture	Lab / Stüdyo / Diğer / Lab / Studio / Others	Bilkent	ECTS
ADA 131	Mimari Çizim / Architectural Drawing	0	3	3	5
ENG 101	İngilizce ve Kompozisyon I / English and Composition I	5	0	3	5
FA 101	Temel Tasarım I / Basic Design I	0	8	6	8.5
FA 171	Sanat, Tasarım ve Kültüre Giriş I / Introduction to Art, Design and Culture I	3	0	3	5
GE 100	Üniversite Hayatına Giriş / Orientation	0	0	1	2
MATH 101	Matematik I / Calculus I	4	0	4	6.5
Bahar Dönemi / Spring Semester					
Ders Kod / Course Code	Ders Adı / Course Name	Saatler / Hours		Kredi / Credits	
		Ders / Lecture	Lab / Stüdyo / Diğer / Lab / Studio / Others	Bilkent	ECTS
ADA 134	Dijital Medyayla Tasarım / Designing with Digital Media	0	3	3	5
ENG 102	İngilizce ve Kompozisyon II / English and Composition II	5	0	3	5
FA 102	Temel Tasarım II / Basic Design II	0	8	6	8.5
MATH 102	Matematik II / Calculus II	4	0	4	6.5
PHYS 101	Genel Fizik I / General Physics I	3	3	4	6.5

İkinci Yıl / Second Year					
Güz Dönemi / Fall Semester					
Ders Kod / Course Code	Ders Adı / Course Name	Saatler / Hours		Kredi / Credits	
		Ders / Lecture	Lab / Stüdyo / Diğer / Lab / Studio / Others	Bilkent	ECTS
ADA 263	Mimarlık Tarihi I / History of Built Environment I	3	0	3	5
ARCH 201	Mimari Tasarım Stüdyosu I / Architectural Design Studio I	2	6	6	8.5
ARCH 221	Mimarlığın Temelleri / Fundamentals of Architecture	3	0	3	5
ARCH 251	Mimari Yapı Sistemleri / Architectural Building Systems	3	0	3	5
GE 250	Üniversite Etkinlik Programı I / Collegiate Activities Program I	3	0	0	1
TURK 101	Türkçe I / Turkish I	0	0	2	3.5
Bahar Dönemi / Spring Semester					
Ders Kod / Course Code	Ders Adı / Course Name	Saatler / Hours		Kredi / Credits	
		Ders / Lecture	Lab / Stüdyo / Diğer / Lab / Studio / Others	Bilkent	ECTS
ADA 264	Mimarlık Tarihi II / History of Built Environment II	3	0	3	5
ARCH 202	Mimari Tasarım Stüdyosu II / Architectural Design Studio II	0	8	6	8.5
ARCH 231	Statik ve Mukavemet / Statics and Strength of Materials	3	0	3	5
ARCH 252	Yapı ve Malzeme / Construction and Materials	3	2	4	6.5
GE 251	Üniversite Etkinlik Programı II / Collegiate Activities Program II	0	0	1	2
TURK 102	Türkçe II / Turkish II	0	0	2	3.5

Üçüncü Yıl / Third Year					
Güz Dönemi / Fall Semester					
Ders Kod / Course Code	Ders Adı / Course Name	Saatler / Hours		Kredi / Credits	
		Ders / Lecture	Lab / Stüdyo / Diğer / Lab / Studio / Others	Bilkent	ECTS
ARCH 290	Yaz Stajı I / Summer Practice I	0	0	0	6.5
ARCH 301	Mimari Tasarım Stüdyosu III / Architectural Design Studio III	0	12	6	8.5
ARCH 331	Strüktürel Tasarım I / Structural Design I	3	0	3	5
HIST 200	Türkiye Tarihi / History of Turkey	3	0	4	6.5
HUM 111	Kültürler, Medeniyetler ve Düşünceler I / Cultures Civilizations and Ideas I	3	0	3	5
IAED 341	Mimari Akustik / Architectural Acoustics	3	0	3	5
Bahar Dönemi / Spring Semester					
Ders Kod / Course Code	Ders Adı / Course Name	Saatler / Hours		Kredi / Credits	
		Ders / Lecture	Lab / Stüdyo / Diğer / Lab / Studio / Others	Bilkent	ECTS
ARCH 302	Mimari Tasarım Stüdyosu IV / Architectural Design Studio IV	0	12	6	8.5
ARCH 332	Strüktürel Tasarım II / Structural Design II	3	0	3	5
ARCH 342	Fiziksel Çevre Teknolojileri / Environmental Technology	3	0	3	5
HUM 112	Kültürler, Medeniyetler ve Düşünceler II / Cultures Civilizations and Ideas II	3	0	3	5
	Temel Bilgisayar Seçmeli Dersi / Computational Skills Core Elective			3	

Dördüncü Yıl/ Fourth Year					
Güz Dönemi/ Fall Semester					
Ders Kod/ Course Code	Ders Adı/ Course Name	Saatler/ Hours		Kredi/ Credits	
		Ders/ Lecture	Lab/ Stüdyo/ Diğer/ Lab/ Studio/ Others	Bilkent	ECTS
ARCH 390	Yaz Stajı II / Summer Practice II	0	0	0	6.5
ARCH 401	Mimari Tasarım Stüdyosu V / Architectural Design Studio V	0	12	6	8.5
ARCH 411	Tarihi Çevrelerin Korunması / Conservation of Historical Environments	3	0	3	5
	Temel İnsani Bilimler Seçmeli Dersi / Conservation of Historical Environments			3	
	Temel Sosyal Bilimler Seçmeli Dersi / Social Science Core Elective			3	
Bahar Dönemi/ Spring Semester					
Ders Kod/ Course Code	Ders Adı/ Course Name	Saatler/ Hours		Kredi/ Credits	
		Ders/ Lecture	Lab/ Stüdyo/ Diğer/ Lab/ Studio/ Others	Bilkent	ECTS
ARCH 402	Mimari Tasarım Stüdyosu VI / Social Science Core Elective	0	12	6	8.5
ARCH 418	Mesleki Uygulama / Professional Practice	3	0	3	5
COMD 358	Profesyonel İletişim / Professional Communication	3	0	3	5
	Sınırlı Seçmeli Ders / Restricted Elective			3	

2. PROGRAM ÇIKTILARI / PROGRAM OUTCOMES

2.1. PROGRAM ÇIKTILARININ LİSTESİ / LIST OF PROGRAM OUTCOMES

- Yapısal olarak sağlam, sürdürülebilir ve estetik çözümler elde etmek için mimari problemleri, süreçleri ve parametreleri tanımlayabilir, formüle edebilir, eleştirel olarak değerlendirebilir ve analiz edebilir. / Able to identify, formulate and critically evaluate and analyze architectural problems, processes and parameters in order to obtain structurally robust, sustainable, and aesthetic solutions.
- Yeni malzemeler, çağdaş inşaat teknikleri ve dijital araçları göz önünde bulundurarak mevcut bina ve çevre teknolojisi bilgisini, kullanıcıların ihtiyaçları, yapısal stabilite, bina güvenliği ve yönetmeliklerin yanı sıra finansal konularla ilgili mimari tasarım çözümlerine uygulayabilir. Bilimin modern düşünce yöntemlerini tanıtır ve öğrencileri küresel zorluklar için yaratıcı çözümler geliştirecek araçlarla donatır. / Able to apply current knowledge of building and environmental technology, considering the new materials, contemporary construction techniques and digital means to architectural design solutions with the concern of users' needs, structural stability, building safety and regulations as well as financial issues. Introduce modern methods of scientific thought and equip students with tools to develop creative solutions for global challenges.

- c. Teknik, teorik ve kavramsal konularda eleştirel yargılarda bulunabilir, araştırma yapabilir, yeni fikirler oluşturabilir ve analitik düşünme becerisi geliştirebilir. / *Able to make critical judgements, carry out research, form new ideas and be able to develop analytical thinking on technical, theoretical and conceptual topics.*
- d. Gerekli olduğunda güncel dijital teknolojileri ve uygun ormedyayı kullanarak grafik iletişimde ileri düzeyde yetkinliğe sahip profesyonel belgeler ve teknik raporlar üretebilir. / *Able to make critical judgements, carry out research, form new ideas and be able to develop analytical thinking on technical, theoretical and conceptual topics.*
- e. Sanat, bilim, tarih, siyaset ve kültürel çalışmalar gibi çeşitli alanlarda geniş bir ilgi yelpazesi sergiler, disiplinlerarası bir alanda ilgili disiplinlerle iletişim kurabilir ve işbirliği yapabilir. Fikirleri, düşünceleri etkili bir şekilde organize edebilir ve bunları çeşitli izleyicilere iletmek için gerekli yazma ve iletişim becerilerini geliştirebilir. / *Demonstrate a broad range of interests in various fields, such as art, science, history, politics and cultural studies and able to communicate and collaborate with related disciplines within an interdisciplinary scope. Develop writing and communication skills necessary for effectively organize ideas, thoughts and convey them to various audience.*
- f. Hem tek başına hem de mimarın önemli mesleki sorumluluğunu tanıyan ekiplerde çalışabilir. / *Able to work both autonomously and in teams recognizing the important professional responsibility of the architect.*
- g. Sosyal, etik kaygılar ve sorumluluk içerisinde yaşam boyu gelişmeye açıklık geliştirir, disiplinde güncel eğilimleri ve ilerlemeyi tanır, problemlerin toplumun yararına ve çevresel, tarihsel, kültürel ve sosyal sürdürülebilirlik açısından disiplinin geleceği için nasıl iyileştirilebileceğini ve/ya değiştirilebileceğini sorgular. / *Develop openness to a life-long progress and recognize current trends and progress in the discipline and examine how problems can be improved or modified for the benefit of the society and for the future of the discipline with respect to environmental, historical, cultural and social sustainability, within social and ethical concerns and responsibility.*
- h. Öğrenciler, derslerin yanı sıra çeşitli ve yaratıcı, sanatsal, kültürel, sportif ve entelektüel faaliyetlere katılarak kampüs hayatından daha fazla faydalanırlar. / *Take advantage of the campus life where students are engaged in diversity, creativity and commitment outside coursework through artistic, cultural, sportive and intellectual activities.*

2.2. PROGRAM ÇIKTILARI - DERSLER MATRİSİ / PROGRAM OUTCOMES - COURSES TABLE

Dersler / Courses	Program Çıktıları / Program Outcomes								Dersler / Courses	Program Çıktıları / Program Outcomes							
	a	b	c	d	e	f	g	h		a	b	c	d	e	f	g	h
ADA 131	✓			✓					ARCH 418		✓		✓	✓	✓	✓	
ADA 134	✓	✓		✓					COMD 358				✓	✓	✓	✓	
ADA 263	✓		✓		✓				ENG 101			✓	✓	✓	✓	✓	
ADA 264	✓		✓		✓				ENG 102			✓	✓	✓	✓	✓	
ARCH 201	✓	✓	✓	✓	✓	✓	✓		FA 101	✓		✓			✓		
ARCH 202	✓	✓	✓	✓					FA 102	✓		✓			✓		
ARCH 221	✓		✓	✓	✓				FA 171			✓		✓			
ARCH 231	✓	✓	✓	✓		✓			GE 100						✓	✓	✓
ARCH 251	✓	✓	✓	✓	✓				GE 250					✓		✓	✓
ARCH 252	✓	✓	✓	✓					GE 251					✓		✓	✓
ARCH 290		✓		✓					HIST 200			✓	✓	✓	✓	✓	
ARCH 301	✓	✓		✓					HUM 111			✓		✓	✓		
ARCH 302	✓	✓		✓	✓		✓		HUM 112			✓		✓	✓		
ARCH 331	✓	✓	✓	✓					IAED 341	✓	✓	✓				✓	
ARCH 332	✓	✓	✓			✓			MATH 101			✓	✓	✓	✓		
ARCH 342	✓	✓	✓	✓	✓		✓		MATH 102			✓	✓	✓	✓		
ARCH 390		✓		✓	✓	✓			PHYS 101	✓			✓	✓	✓		
ARCH 401	✓	✓	✓	✓	✓	✓	✓		TURK 101			✓		✓		✓	
ARCH 402	✓	✓		✓	✓	✓	✓		TURK 102			✓		✓		✓	
ARCH 411			✓	✓	✓	✓	✓										

Tablo.2.2. Mimarlık Lisans Programı - Program Çıktıları ve Dersler Tablosu / **Table.2.2.** Architecture Undergraduate Program - Program Outcomes and Courses Table

3. PERFORMANS ÖLÇÜMLERİNDE KULLANILACAK METRİKLER / METRICS TO BE USED IN PERFORMANCE MEASUREMENT

3.1. PERFORMANS ÖLÇÜMLERİNDE KULLANILACAK DEĞERLENDİRME METOTLARI / EVALUATION METHODS USED IN PERFORMANCE MEASUREMENTS

Course Code	Program Outputs	Studio work	Homework	Midterm: Drawing	Midterm: Drawing	Project	Portfolio	In-class participation	Total Contribution	Qualification Calculation Method	(Average) Qualification Grade	Qualification Threshold (%)
ADA 131	a	10	20	20	20	20	5	5	100	M1	60	70
	Program Outputs	Studio work	Homework	Midterm: Drawing	Midterm: Drawing	Project	Portfolio	In-class participation	Total Contribution	Qualification Calculation Method	(Average) Qualification Grade	Qualification Threshold (%)
	d	10	20	20	20	20	5	5	100	M1	60	70
Course Code	Program Outputs	Lab work	Homework	Midterm: Drawing	Term project	Total Contribution	Qualification Calculation Method	(Average) Qualification Grade	Qualification Threshold (%)			
ADA 134	a	10	25	25	40	100	M1	60	70			
	Program Outputs	Term project	Total Contribution	Qualification Calculation Method	(Average) Qualification Grade	Qualification Threshold (%)						
	b	100	100	M1	60	70						
	Program Outputs	Lab work	Homework	Midterm: Drawing	Term project	Total Contribution	Qualification Calculation Method	(Average) Qualification Grade	Qualification Threshold (%)			
d	10	25	25	40	100	M1	60	70				
Course Code	Program Outputs	Presentations	Research essay	Midterm	Final exam: Essay/ written	Papers(s)/ Reports	Attendance and performance	Total Contribution	Qualification Calculation Method	(Average) Qualification Grade	Qualification Threshold (%)	
ADA 263	a	5	20	25	30	15	5	100	M1	54	70	
	Program Outputs	Presentations	Research essay	Midterm	Final exam: Essay/ written	Papers(s)/ Reports	Attendance and performance	Total Contribution	Qualification Calculation Method	(Average) Qualification Grade	Qualification Threshold (%)	
	c	5	20	25	30	15	5	100	M1	54	70	
	Program Outputs	Presentations	Research essay	Midterm	Final exam: Essay/ written	Papers(s)/ Reports	Attendance and performance	Total Contribution	Qualification Calculation Method	(Average) Qualification Grade	Qualification Threshold (%)	
e	5	20	25	30	15	5	100	M1	54	70		

Course Code	Program Outputs	Final	Total Contribution	Qualification Calculation Method	(Average) Qualification Grade	Qualification Threshold (%)						
ARCH 201	a	100	100	M1	70	60						
	Program Outputs	Final	Total Contribution	Qualification Calculation Method	(Average) Qualification Grade	Qualification Threshold (%)						
	b	100	100	M1	70	60						
	Program Outputs	Final	Midterm: Drawing	Total Contribution	Qualification Calculation Method	(Average) Qualification Grade	Qualification Threshold (%)					
	c	80	20	100	M1	70	60					
	Program Outputs	Final	Midterm: Drawing	Total Contribution	Qualification Calculation Method	(Average) Qualification Grade	Qualification Threshold (%)					
	d	70	30	100	M1	70	60					
	Program Outputs	Final	Total Contribution	Qualification Calculation Method	(Average) Qualification Grade	Qualification Threshold (%)						
	e	100	100	M1	70	60						
	Program Outputs	Final	Midterm: Drawing	Total Contribution	Qualification Calculation Method	(Average) Qualification Grade	Qualification Threshold (%)					
	f	90	10	100	M1	70	60					
	Program Outputs	Final	Total Contribution	Qualification Calculation Method	(Average) Qualification Grade	Qualification Threshold (%)						
g	100	100	M1	70	60							
Course Code	Program Outputs	Midterm	Final	Papers(s) /Reports	Presentations	In-class attendance	Total Contribution	Qualification Calculation Method	(Average) Qualification Grade	Qualification Threshold (%)		
ARCH 221	a	25	40	15	15	5	100	M1	60	60		
	Program Outputs	Midterm	Final	Papers(s) /Reports	Presentations	In-class attendance	Total Contribution	Qualification Calculation Method	(Average) Qualification Grade	Qualification Threshold (%)		
	c	15	15	45	20	5	100	M1	60	60		
	Program Outputs	Papers(s) /Reports	Presentations	Total Contribution	Qualification Calculation Method	(Average) Qualification Grade	Qualification Threshold (%)					
	d	50	50	100	M1	60	60					
	Program Outputs	Midterm	Final	Papers(s) /Reports	Presentations	In-class attendance	Total Contribution	Qualification Calculation Method	(Average) Qualification Grade	Qualification Threshold (%)		
e	10	10	30	45	5	100	M1	60	60			

Course Code	Program Outputs	Papers(s) /Reports	Papers(s) /Reports	Midterm: Drawing	Midterm: Open-Book	Project	Final	Total Contribution	Qualification Calculation Method	(Average) Qualification Grade	Qualification Threshold (%)	
ARCH 251	a	20	20	20	10	20	10	100	M1	60	60	
	Program Outputs	In-class attendance	Papers(s) /Reports	Papers(s) /Reports	Midterm: Drawing	Midterm: Open-Book	Project	Final	Total Contribution	Qualification Calculation Method	(Average) Qualification Grade	Qualification Threshold (%)
	b	10	10	10	15	20	15	20	100	M1	60	60
	Program Outputs	In-class attendance	Papers(s) /Reports	Papers(s) /Reports	Midterm: Drawing	Midterm: Open-Book	Project	Final	Total Contribution	Qualification Calculation Method	(Average) Qualification Grade	Qualification Threshold (%)
	c	10	20	20	10	10	20	10	100	M1	60	60
	Program Outputs	In-class attendance	Papers(s)/ Reports	Papers(s)/ Reports	Midterm: Drawing	Project	Total Contribution	Qualification Calculation Method	(Average) Qualification Grade	Qualification Threshold (%)		
	d	30	20	20	10	20	100	M1	60	60		
	Program Outputs	Papers(s)/ Reports	Papers(s)/ Reports	Midterm: Drawing	Project	Total Contribution	Qualification Calculation Method	(Average) Qualification Grade	Qualification Threshold (%)			
e	30	30	20	20	100	M1	60	60				

Course Code	Program Outputs	Project 2 Final Jury	Total Contribution	Qualification Calculation Method	(Average) Qualification Grade	Qualification Threshold (%)	
ARCH 301	a	100	100	M1	70	60	
	Program Outputs	Project 2 Final Jury	Total Contribution	Qualification Calculation Method	(Average) Qualification Grade	Qualification Threshold (%)	
	b	100	100	M1	70	60	
	Program Outputs	Project 2 Final Jury	Total Contribution	Qualification Calculation Method	(Average) Qualification Grade	Qualification Threshold (%)	
d	100	100	M1	70	60		

Course Code	Program Outputs	Midterm	Final Exam	Project	Total Contribution	Qualification Calculation Method	(Average) Qualification Grade	Qualification Threshold (%)	
ARCH 331	a	40	40	20	100	M1	60	60	
	Program Outputs	Midterm	Final Exam	Project	Total Contribution	Qualification Calculation Method	(Average) Qualification Grade	Qualification Threshold (%)	
	b	40	50	10	100	M1	60	60	

Course Code	Program Outputs	Project	Total Contribution	Qualification Calculation Method	(Average) Qualification Grade	Qualification Threshold (%)					
ARCH 331	c	100	100	M1	60	60					
	Program Outputs	Project	Total Contribution	Qualification Calculation Method	(Average) Qualification Grade	Qualification Threshold (%)					
	d	100	100	M1	60	60					
Course Code	Program Outputs	Project	Project	Pre-jury	Final:Practical (skills)	Total Contribution	Qualification Calculation Method	(Average) Qualification Grade	Qualification Threshold (%)		
ARCH 401	a	20	20	30	30	100	M1	70	70		
	Program Outputs	Project	Project	Pre-jury	Final:Practical (skills)	Total Contribution	Qualification Calculation Method	(Average) Qualification Grade	Qualification Threshold (%)		
	b	40	25	20	15	100	M1	70	70		
	Program Outputs	Project	Project	Pre-jury	Final:Practical (skills)	Total Contribution	Qualification Calculation Method	(Average) Qualification Grade	Qualification Threshold (%)		
	c	10	20	25	45	100	M1	70	70		
	Program Outputs	Project	Project	Pre-jury	Final:Practical (skills)	Total Contribution	Qualification Calculation Method	(Average) Qualification Grade	Qualification Threshold (%)		
	d	10	20	30	40	100	M1	70	70		
	Program Outputs	Project	Project	Pre-jury	Final:Practical (skills)	Total Contribution	Qualification Calculation Method	(Average) Qualification Grade	Qualification Threshold (%)		
	e	30	20	25	25	100	M1	70	70		
	Program Outputs	Project	Project	Pre-jury	Final:Practical (skills)	Total Contribution	Qualification Calculation Method	(Average) Qualification Grade	Qualification Threshold (%)		
	f	20	20	30	30	100	M1	70	70		
	Program Outputs	Project	Project	Pre-jury	Final:Practical (skills)	Total Contribution	Qualification Calculation Method	(Average) Qualification Grade	Qualification Threshold (%)		
g	20	20	30	30	100	M1	70	70			
Course Code	Program Outputs	Short essay	Short essay	Research essay	Final:Open-book	Total Contribution	Qualification Calculation Method	(Average) Qualification Grade	Qualification Threshold (%)		
ARCH 411	c	20	20	30	30	100	M1	60	60		
	Program Outputs	Short essay	Short essay	Research essay	Total Contribution	Qualification Calculation Method	(Average) Qualification Grade	Qualification Threshold (%)			
	d	40	20	40	100	M1	60	60			

Course Code	Program Outputs	Short essay	Short essay	Research essay	Total Contribution	Qualification Calculation Method	(Average) Qualification Grade	Qualification Threshold (%)				
ARCH 411	e	40	20	40	100	M1	60	60				
	Program Outputs	Short essay	Short essay	Research essay	Final:Open-book	Total Contribution	Qualification Calculation Method	(Average) Qualification Grade	Qualification Threshold (%)			
	f	30	20	30	20	100	M1	60	60			
	Program Outputs	Short essay	Short essay	Research essay	Total Contribution	Qualification Calculation Method	(Average) Qualification Grade	Qualification Threshold (%)				
	g	30	30	40	100	M1	60	60				
Course Code	Program Outputs	Papers(s)/ Reports	Performance	Performance	Performance	Term project	Total Contribution	Qualification Calculation Method	(Average) Qualification Grade	Qualification Threshold (%)		
ARCH 418	b	10	20	20	30	20	100	M1	70	60		
	Program Outputs	Performance	Midterm: Take-home	Total Contribution	Qualification Calculation Method	(Average) Qualification Grade	Qualification Threshold (%)					
	d	50	50	100	M1	70	60					
	Program Outputs	Papers(s)/ Reports	Term project	Total Contribution	Qualification Calculation Method	(Average) Qualification Grade	Qualification Threshold (%)					
	e	30	70	100	M1	70	60					
	Program Outputs	Performance	Performance	Performance	Total Contribution	Qualification Calculation Method	(Average) Qualification Grade	Qualification Threshold (%)				
	f	30	50	20	100	M1	70	60				
	Program Outputs	In-class participation	Papers(s)/ Reports	Performance	Performance	Performance	Total Contribution	Qualification Calculation Method	(Average) Qualification Grade	Qualification Threshold (%)		
	g	10	10	20	10	50	100	M1	70	60		
Course Code	Program Outputs	Homeworks	Homeworks	Homeworks	Homeworks	Homeworks	In-class assignments	In-class assignments	In-class assignments	In-class assignments	In-class assignments	Exam
COMD 358	d	5	5	5	5	5	5	5	5	5	5	25
		Project & Presentations	Total Contribution	Qualification Calculation Method	(Average) Qualification Grade	Qualification Threshold (%)						
		25	100	M1	60	70						
	Program Outputs	Homeworks	Homeworks	Homeworks	Homeworks	Homeworks	In-class assignments	In-class assignments	In-class assignments	In-class assignments	In-class assignments	Exam
	e	5	5	5	5	5	5	5	5	5	5	25
		Project & Presentations	Total Contribution	Qualification Calculation Method	(Average) Qualification Grade	Qualification Threshold (%)						
		25	100	M1	60	70						

Course Code	Program Outputs	Homeworks	Homeworks	Homeworks	Homeworks	Homeworks	In-class assignments	In-class assignments	In-class assignments	In-class assignments	In-class assignments	Exam
COMD 358	f	5	5	5	5	5	5	5	5	5	5	25
		Project & Presentations	Total Contribution	Qualification Calculation Method	(Average) Qualification Grade	Qualification Threshold (%)						
		25	100	M1	60	70						
	Program Outputs	Homeworks	Homeworks	Homeworks	Homeworks	Homeworks	In-class assignments	In-class assignments	In-class assignments	In-class assignments	In-class assignments	Exam
	g	5	5	5	5	5	5	5	5	5	5	25
		Project & Presentations	Total Contribution	Qualification Calculation Method	(Average) Qualification Grade	Qualification Threshold (%)						
25		100	M1	60	70							
Course Code	Program Outputs	Academic Essay 1	Essay	Oral Presentation	Student Led Discussion	Academic Summary and Critical Response Task	Self-progress Reflection Task	Final	Total Contribution	Qualification Calculation Method	(Average) Qualification Grade	Qualification Threshold (%)
ENG 101	c	20	25	8	7	10	5	25	100	M1	70	75
	Program Outputs	Academic Essay 1	Essay	Oral Presentation	Student Led Discussion	Academic Summary and Critical Response Task	Self-progress Reflection Task	Final	Total Contribution	Qualification Calculation Method	(Average) Qualification Grade	Qualification Threshold (%)
	d	20	25	8	7	10	5	25	100	M1	70	75
	Program Outputs	Academic Essay 1	Essay	Oral Presentation	Student Led Discussion	Academic Summary and Critical Response Task	Self-progress Reflection Task	Final	Total Contribution	Qualification Calculation Method	(Average) Qualification Grade	Qualification Threshold (%)
	e	20	25	8	7	10	5	25	100	M1	70	75
	Program Outputs	Academic Essay 1	Essay	Oral Presentation	Student Led Discussion	Academic Summary and Critical Response Task	Self-progress Reflection Task	Final	Total Contribution	Qualification Calculation Method	(Average) Qualification Grade	Qualification Threshold (%)
	f	20	25	8	7	10	5	25	100	M1	70	75
	Program Outputs	Academic Essay 1	Essay	Oral Presentation	Student Led Discussion	Academic Summary and Critical Response Task	Self-progress Reflection Task	Final	Total Contribution	Qualification Calculation Method	(Average) Qualification Grade	Qualification Threshold (%)
	g	20	25	8	7	10	5	25	100	M1	70	75

Course Code	Program Outputs	Library Skills Task	Academic Essay	Oral Presentation	Research Paper Outline	Research essay	Interviews	Total Contribution	Qualification Calculation Method	(Average) Qualification Grade	Qualification Threshold (%)	
ENG 102	c	5	20	20	10	30	15	100	M1	70	70	
	Program Outputs	Library Skills Task	Academic Essay	Oral Presentation	Research Paper Outline	Research essay	Interviews	Total Contribution	Qualification Calculation Method	(Average) Qualification Grade	Qualification Threshold (%)	
	d	5	20	20	10	30	15	100	M1	70	70	
	Program Outputs	Library Skills Task	Academic Essay	Oral Presentation	Research Paper Outline	Research essay	Interviews	Total Contribution	Qualification Calculation Method	(Average) Qualification Grade	Qualification Threshold (%)	
	e	5	20	20	10	30	15	100	M1	70	70	
	Program Outputs	Library Skills Task	Academic Essay	Oral Presentation	Research Paper Outline	Research essay	Interviews	Total Contribution	Qualification Calculation Method	(Average) Qualification Grade	Qualification Threshold (%)	
	f	5	20	20	10	30	15	100	M1	70	70	
	Program Outputs	Library Skills Task	Academic Essay	Oral Presentation	Research Paper Outline	Research essay	Interviews	Total Contribution	Qualification Calculation Method	(Average) Qualification Grade	Qualification Threshold (%)	
g	5	20	20	10	30	15	100	M1	70	70		
Course Code	Program Outputs	Project	Project	Project	Total Contribution	Qualification Calculation Method	(Average) Qualification Grade					
FA 101	a	20	30	50	100	M3	55					
	Program Outputs	Project	Project	Project	Total Contribution	Qualification Calculation Method	(Average) Qualification Grade					
	c	20	30	50	100	M3	55					
	Program Outputs	Project	Project	Project	Total Contribution	Qualification Calculation Method	(Average) Qualification Grade					
f	20	30	50	100	M3	55						
Course Code	Program Outputs	Midterm	Final	Homework	Homework	Quiz	Quiz	Oral Presentation	Total Contribution	Qualification Calculation Method	(Average) Qualification Grade	Qualification Threshold (%)
FA 171	c	30	35	5	5	5	5	15	100	M1	50	60
	Program Outputs	Midterm	Final	Homework	Homework	Quiz	Quiz	Oral Presentation	Total Contribution	Qualification Calculation Method	(Average) Qualification Grade	Qualification Threshold (%)
	e	30	35	5	5	5	5	15	100	M1	50	60

Course Code	Program Outputs	In-class participation	Total Contribution	Qualification Calculation Method	(Average) Qualification Grade	Qualification Threshold (%)		
GE 100	f	100	100	M1	12	80		
	Program Outputs	In-class participation	Total Contribution	Qualification Calculation Method	(Average) Qualification Grade	Qualification Threshold (%)		
	g	100	100	M1	12	80		
	Program Outputs	In-class participation	Total Contribution	Qualification Calculation Method	(Average) Qualification Grade	Qualification Threshold (%)		
	h	100	100	M1	12	80		
Course Code	Program Outputs	In-class participation	Total Contribution	Qualification Calculation Method	(Average) Qualification Grade	Qualification Threshold (%)		
GE 251	e	100	100	M1	70	70		
	Program Outputs	In-class participation	Total Contribution	Qualification Calculation Method	(Average) Qualification Grade	Qualification Threshold (%)		
	g	100	100	M1	70	70		
	Program Outputs	In-class participation	Total Contribution	Qualification Calculation Method	(Average) Qualification Grade	Qualification Threshold (%)		
	h	100	100	M1	70	70		
Course Code	Program Outputs	Oral presentation	Research essay	Performance	Total Contribution	Qualification Calculation Method	(Average) Qualification Grade	Qualification Threshold (%)
HIST 200	c	10	60	30	100	M1	70	75
	Program Outputs	Oral presentation	Research essay	Performance	Total Contribution	Qualification Calculation Method	(Average) Qualification Grade	Qualification Threshold (%)
	d	10	60	30	100	M1	70	75
	Program Outputs	Oral presentation	Research essay	Performance	Total Contribution	Qualification Calculation Method	(Average) Qualification Grade	Qualification Threshold (%)
	e	10	60	30	100	M1	70	75
	Program Outputs	Oral presentation	Research essay	Performance	Total Contribution	Qualification Calculation Method	(Average) Qualification Grade	Qualification Threshold (%)
	f	10	60	30	100	M1	70	75
	Program Outputs	Oral presentation	Research essay	Performance	Total Contribution	Qualification Calculation Method	(Average) Qualification Grade	Qualification Threshold (%)
	g	10	60	30	100	M1	70	75

Course Code	Program Outputs	Quizzes	Course Project	In-class participation	Final Examination	Total Contribution	Qualification Calculation Method	(Average) Qualification Grade	Qualification Threshold (%)
HUM 111	c	30	30	10	30	100	M1	60	75
	Program Outputs	Quizzes	Course Project	In-class participation	Final Examination	Total Contribution	Qualification Calculation Method	(Average) Qualification Grade	Qualification Threshold (%)
	e	30	30	10	30	100	M1	60	75
	Program Outputs	Quizzes	Course Project	In-class participation	Final Examination	Total Contribution	Qualification Calculation Method	(Average) Qualification Grade	Qualification Threshold (%)
	f	30	30	10	30	100	M1	60	75
Course Code	Program Outputs	Quizzes	In-class participation	Final:Essay/written	Project	Total Contribution	Qualification Calculation Method	(Average) Qualification Grade	Qualification Threshold (%)
HUM 112	c	30	10	30	30	100	M1	60	75
	Program Outputs	Quizzes	In-class participation	Final:Essay/written	Project	Total Contribution	Qualification Calculation Method	(Average) Qualification Grade	Qualification Threshold (%)
	e	30	10	30	30	100	M1	60	75
	Program Outputs	Quizzes	In-class participation	Final:Essay/written	Project	Total Contribution	Qualification Calculation Method	(Average) Qualification Grade	Qualification Threshold (%)
	f	30	10	30	30	100	M1	60	75
Course Code	Program Outputs	Midterm	Term project	Term project	Total Contribution	Qualification Calculation Method	(Average) Qualification Grade	Qualification Threshold (%)	
IAED 341	a	40	30	30	100	M1	60	75	
	Program Outputs	Midterm	Term project	Term project	Total Contribution	Qualification Calculation Method	(Average) Qualification Grade	Qualification Threshold (%)	
	b	40	30	30	100	M1	60	75	
	Program Outputs	Midterm	Term project	Term project	Total Contribution	Qualification Calculation Method	(Average) Qualification Grade	Qualification Threshold (%)	
	c	40	30	30	100	M1	60	75	
	Program Outputs	Midterm	Term project	Term project	Total Contribution	Qualification Calculation Method	(Average) Qualification Grade	Qualification Threshold (%)	
	g	40	30	30	100	M1	60	75	

Course Code	Program Outputs	Midterm	Midterm	Final	Quiz	Homework	Total Contribution	Qualification Calculation Method	(Average) Qualification Grade	Qualification Threshold (%)	
MATH 101	c	25	25	30	10	10	100	M1	40	50	
	Program Outputs	Midterm	Midterm	Final	Quiz	Homework	Total Contribution	Qualification Calculation Method	(Average) Qualification Grade	Qualification Threshold (%)	
	d	25	25	30	10	10	100	M1	40	50	
	Program Outputs	Midterm	Midterm	Final	Quiz	Homework	Total Contribution	Qualification Calculation Method	(Average) Qualification Grade	Qualification Threshold (%)	
	e	25	25	30	10	10	100	M1	40	50	
	Program Outputs	Midterm	Midterm	Final	Quiz	Homework	Total Contribution	Qualification Calculation Method	(Average) Qualification Grade	Qualification Threshold (%)	
f	25	25	30	10	10	100	M1	40	50		
Course Code	Program Outputs	Midterm: Essay / written	Midterm	Final:Essay/ written	Total Contribution	Qualification Calculation Method	(Average) Qualification Grade	Qualification Threshold (%)			
MATH 102	c	30	30	40	100	M1	40	50			
	Program Outputs	Midterm: Essay / written	Midterm	Final:Essay/ written	Total Contribution	Qualification Calculation Method	(Average) Qualification Grade	Qualification Threshold (%)			
	d	30	30	40	100	M1	40	50			
	Program Outputs	Midterm: Essay / written	Midterm	Final:Essay/ written	Total Contribution	Qualification Calculation Method	(Average) Qualification Grade	Qualification Threshold (%)			
	e	30	30	40	100	M1	40	50			
	Program Outputs	Midterm: Essay / written	Midterm	Final:Essay/ written	Total Contribution	Qualification Calculation Method	(Average) Qualification Grade	Qualification Threshold (%)			
f	30	30	40	100	M1	40	50				
Course Code	Program Outputs	Midterm	Midterm	Quiz	Homework	Final	Lab work	Total Contribution	Qualification Calculation Method	(Average) Qualification Grade	Qualification Threshold (%)
PHYS 101	a	15	20	10	10	25	20	100	M1	50	50
	Program Outputs	Midterm	Midterm	Quiz	Homework	Final	Lab work	Total Contribution	Qualification Calculation Method	(Average) Qualification Grade	Qualification Threshold (%)
	d	15	20	10	10	25	20	100	M1	50	50
	Program Outputs	Midterm	Midterm	Quiz	Homework	Final	Lab work	Total Contribution	Qualification Calculation Method	(Average) Qualification Grade	Qualification Threshold (%)
	e	15	20	10	10	25	20	100	M1	50	50
	Program Outputs	Midterm	Midterm	Quiz	Homework	Final	Lab work	Total Contribution	Qualification Calculation Method	(Average) Qualification Grade	Qualification Threshold (%)
f	15	20	10	10	25	20	100	M1	50	50	

Course Code	Program Outputs	Blog	Final	Total Contribution	Qualification Calculation Method	(Average) Qualification Grade	Qualification Threshold (%)
TURK 101	c	70	30	100	M1	70	30
	Program Outputs	Blog	Final	Total Contribution	Qualification Calculation Method	(Average) Qualification Grade	Qualification Threshold (%)
	e	70	30	100	M1	70	30
	Program Outputs	Blog	Final	Total Contribution	Qualification Calculation Method	(Average) Qualification Grade	Qualification Threshold (%)
	g	70	30	100	M1	70	30
Course Code	Program Outputs	Blog	Final	Total Contribution	Qualification Calculation Method	(Average) Qualification Grade	Qualification Threshold (%)
TURK 102	c	70	30	100	M1	70	60
	Program Outputs	Blog	Final	Total Contribution	Qualification Calculation Method	(Average) Qualification Grade	Qualification Threshold (%)
	e	70	30	100	M1	70	60
	Program Outputs	Blog	Final	Total Contribution	Qualification Calculation Method	(Average) Qualification Grade	Qualification Threshold (%)
	g	70	30	100	M1	70	60

- **Ölçümlerde Kullanılan Metotlarla İlgili Açıklamalar / Explanations About the Methods Used in Measurements**

Bütün metotlar için sadece dersi geçen öğrencilerin notları kullanılacaktır. / For all methods, only the grades of students who pass the course will be used.

- G = Bölüm tarafından belirlenmiş olan başarılı sayılabilecek minimum not / G = Minimum grade that can be considered successful as determined by the department
- T = Program çıktısı başarısı için eşik değer / T = Threshold value for program output success
- M1: Öğrencilerin %T'sinin not ortalamasının G veya üzerinde olması / M1: T% of students have a grade point average of G or above
- M2: Öğrencilerin %T'sinin bölüm ortalaması üzerinde not almış olması / M2: %T of students have received grades above the department average
- M3: Öğrencilerin not ortalamasının G veya üzerinde olması / M3: Students' grade point average should be G or above

- M4: Öğrencilerin %T'sinin not ortalamasının dersi alan tüm öğrencilerin ortalamasına eşit veya daha yüksek olması / *M4: The GPA of %T of students is equal to or higher than the average of all students taking the course*

3.2. PERFORMANS ÖLÇÜMLERİNDE KULLANILAN METOTLAR VE PERFORMANS SONUÇ DETAYLARI / METHODS USED IN PERFORMANCE MEASUREMENTS AND PERFORMANCE RESULT DETAILS

Program Çıktısı / Program Outcome	Yeterlilik Hesaplama Yöntemi / Method	(Ortalama) Yeterlilik Notu / Minimum Successful Grade	Yeterlilik Eşiği (%) / Threshold Percentage (%)	Toplam Öğrenci Sayısı / Number of Students (All)	Toplam Dept. Öğrenci Sayısı / Number of Students (Dept.)	Tüm Öğrenci Ort. / Average (All Std.)	Dept. Öğrenci Ort. / Average (Dept. Std.)	Yeterliliği Sağlayan Öğrenci Sayısı (Toplam) / Number of Succ. Students (All)	Yeterliliği Sağlayan Öğrenci Sayısı (Dept.) / Number of Succ. Students (Dept.)	Yeterlilik Oranı (Toplam Öğrenci) / Success Ratio (All)	Yeterlilik Oranı (Bölüm Öğrenci) / Success Ratio (Dept.)	Performans / Performance	Yeterlilik Oranı / Success Ratio
ADA 131 - Mimari Çizim / ADA 131 - Architectural Drawing													
a	M1	60	70	62	53	79.15	79.73	60	51	96.77	96.23	Yeterli ✓ / Sufficient ✓	96.23
d	M1	60	70	62	53	79.15	79.73	60	51	96.77	96.23	Yeterli ✓ / Sufficient ✓	96.23
ADA 134 - Dijital Medyayla Tasarım / ADA 134 - Designing with Digital Media													
a	M1	60	70	19	13	77.47	82.41	18	13	94.74	100.00	Yeterli ✓ / Sufficient ✓	100.00
b	M1	60	70	19	13	83.84	88.00	19	13	100.00	100.00	Yeterli ✓ / Sufficient ✓	100.00
d	M1	60	70	19	13	77.47	82.41	18	13	94.74	100.00	Yeterli ✓ / Sufficient ✓	100.00
ADA 263 - Mimarlık Tarihi I / ADA 263 - History of Built Environment I													
a	M1	54	70	184	66	73.71	82.58	158	66	85.87	100.00	Yeterli ✓ / Sufficient ✓	100.00
c	M1	54	70	184	66	73.71	82.58	158	66	85.87	100.00	Yeterli ✓ / Sufficient ✓	100.00
e	M1	54	70	184	66	73.71	82.58	158	66	85.87	100.00	Yeterli ✓ / Sufficient ✓	100.00
ARCH 201 - Mimari Tasarım Stüdyosu I / ARCH 201 - Architectural Design Studio I													
a	M1	70	60	58	58	77.20	77.20	47	47	81.03	81.03	Yeterli ✓ / Sufficient ✓	81.03
b	M1	70	60	58	58	77.20	77.20	47	47	81.03	81.03	Yeterli ✓ / Sufficient ✓	81.03
c	M1	70	60	58	58	78.27	78.27	47	47	81.03	81.03	Yeterli ✓ / Sufficient ✓	81.03

Program Çıktısı / Program Outcome	Yeterlilik Hesaplama Yöntemi / Method	(Ortalama) Yeterlilik Notu / Minimum Successful Grade	Yeterlilik Eşiği (%) / Threshold Percentage (%)	Toplam Öğrenci Sayısı / Number of Students (All)	Toplam Dept. Öğrenci Sayısı / Number of Students (Dept.)	Tüm Öğrenci Ort. / Average (All Std.)	Dept. Öğrenci Ort. / Average (Dept. Std.)	Yeterliliği Sağlayan Öğrenci Sayısı (Toplam) / Number of Succ. Students (All)	Yeterliliği Sağlayan Öğrenci Sayısı (Dept.) / Number of Succ. Students (Dept.)	Yeterlilik Oranı (Toplam Öğrenci) / Success Ratio (All)	Yeterlilik Oranı (Bölüm Öğrenci) / Success Ratio (Dept.)	Performans / Performance	Yeterlilik Oranı / Success Ratio
ARCH 201 - Mimari Tasarım Stüdyosu I / ARCH 201 - Architectural Design Studio I													
d	M1	70	60	58	58	78.81	78.81	48	48	82.76	82.76	Yeterli ✓ / Sufficient ✓	82.76
e	M1	70	60	58	58	77.20	77.20	47	47	81.03	81.03	Yeterli ✓ / Sufficient ✓	81.03
f	M1	70	60	58	58	77.74	77.74	47	47	81.03	81.03	Yeterli ✓ / Sufficient ✓	81.03
g	M1	70	60	58	58	77.20	77.20	47	47	81.03	81.03	Yeterli ✓ / Sufficient ✓	81.03
ARCH 221 - Mimarlığın Temelleri / ARCH 221 - Fundamentals of Architecture													
a	M1	60	60	75	75	79.20	79.20	74	74	98.67	98.67	Yeterli ✓ / Sufficient ✓	98.67
c	M1	60	60	75	75	79.10	79.10	75	75	100.00	100.00	Yeterli ✓ / Sufficient ✓	100.00
d	M1	60	60	75	75	82.01	82.01	75	75	100.00	100.00	Yeterli ✓ / Sufficient ✓	100.00
e	M1	60	60	75	75	82.79	82.79	75	75	100.00	100.00	Yeterli ✓ / Sufficient ✓	100.00
ARCH 251 - Mimari Yapı Sistemleri / ARCH 251 - Architectural Building Systems													
a	M1	60	60	59	59	72.22	72.22	53	53	89.83	89.83	Yeterli ✓ / Sufficient ✓	89.83
b	M1	60	60	59	59	70.97	70.97	52	52	88.14	88.14	Yeterli ✓ / Sufficient ✓	88.14
c	M1	60	60	59	59	73.43	73.43	54	54	91.53	91.53	Yeterli ✓ / Sufficient ✓	91.53
d	M1	60	60	59	59	77.41	77.41	58	58	98.31	98.31	Yeterli ✓ / Sufficient ✓	98.31
e	M1	60	60	59	59	74.67	74.67	54	54	91.53	91.53	Yeterli ✓ / Sufficient ✓	91.53
ARCH 301 - Mimari Tasarım Stüdyosu III / ARCH 301 - Architectural Design Studio III													
a	M1	70	60	61	61	84.68	84.68	57	57	93.44	93.44	Yeterli ✓ / Sufficient ✓	93.44
b	M1	70	60	61	61	84.68	84.68	57	57	93.44	93.44	Yeterli ✓ / Sufficient ✓	93.44
d	M1	70	60	61	61	84.68	84.68	57	57	93.44	93.44	Yeterli ✓ / Sufficient ✓	93.44

Program Çıktısı / Program Outcome	Yeterlilik Hesaplama Yöntemi / Method	(Ortalama) Yeterlilik Notu / Minimum Successful Grade	Yeterlilik Eşiği (%) / Threshold Percentage (%)	Toplam Öğrenci Sayısı / Number of Students (All)	Toplam Dept. Öğrenci Sayısı / Number of Students (Dept.)	Tüm Öğrenci Ort. / Average (All Std.)	Dept. Öğrenci Ort. / Average (Dept. Std.)	Yeterliliği Sağlayan Öğrenci Sayısı (Toplam) / Number of Succ. Students (All)	Yeterliliği Sağlayan Öğrenci Sayısı (Dept.) / Number of Succ. Students (Dept.)	Yeterlilik Oranı (Toplam Öğrenci) / Success Ratio (All)	Yeterlilik Oranı (Bölüm Öğrenci) / Success Ratio (Dept.)	Performans / Performance	Yeterlilik Oranı / Success Ratio
ARCH 331 - Strüktürel Tasarım I / ARCH 331 - Structural Design I													
a	M1	60	60	36	36	72.01	72.01	34	34	94.44	94.44	Yeterli ✓ / Sufficient ✓	94.44
b	M1	60	60	36	36	69.51	69.51	27	27	75.00	75.00	Yeterli ✓ / Sufficient ✓	75.00
c	M1	60	60	36	36	90.00	90.00	36	36	100.00	100.00	Yeterli ✓ / Sufficient ✓	100.00
d	M1	60	60	36	36	90.00	90.00	36	36	100.00	100.00	Yeterli ✓ / Sufficient ✓	100.00
ARCH 401 - Mimari Tasarım Stüdyosu V / ARCH 401 - Architectural Design Studio V													
a	M1	70	70	57	57	82.73	82.73	53	53	92.98	92.98	Yeterli ✓ / Sufficient ✓	92.98
b	M1	70	70	57	57	82.34	82.34	51	51	89.47	89.47	Yeterli ✓ / Sufficient ✓	89.47
c	M1	70	70	57	57	82.84	82.84	53	53	92.98	92.98	Yeterli ✓ / Sufficient ✓	92.98
d	M1	70	70	57	57	82.85	82.85	53	53	92.98	92.98	Yeterli ✓ / Sufficient ✓	92.98
e	M1	70	70	57	57	82.60	82.60	53	53	92.98	92.98	Yeterli ✓ / Sufficient ✓	92.98
f	M1	70	70	57	57	82.73	82.73	53	53	92.98	92.98	Yeterli ✓ / Sufficient ✓	92.98
g	M1	70	70	57	57	82.73	82.73	53	53	92.98	92.98	Yeterli ✓ / Sufficient ✓	92.98
ARCH 411 - Tarihi Çevrelerin Korunması / ARCH 411 - Conservation of Historical Environments													
c	M1	60	60	39	39	80.52	80.52	39	39	100.00	100.00	Yeterli ✓ / Sufficient ✓	100.00
d	M1	60	60	39	39	84.31	84.31	39	39	100.00	100.00	Yeterli ✓ / Sufficient ✓	100.00
e	M1	60	60	39	39	84.31	84.31	39	39	100.00	100.00	Yeterli ✓ / Sufficient ✓	100.00
f	M1	60	60	39	39	81.76	81.76	39	39	100.00	100.00	Yeterli ✓ / Sufficient ✓	100.00
g	M1	60	60	39	39	83.56	83.56	39	39	100.00	100.00	Yeterli ✓ / Sufficient ✓	100.00

Program Çıktısı / Program Outcome	Yeterlilik Hesaplama Yöntemi / Method	(Ortalama) Yeterlilik Notu / Minimum Successful Grade	Yeterlilik Eşiği (%) / Threshold Percentage (%)	Toplam Öğrenci Sayısı / Number of Students (All)	Toplam Dept. Öğrenci Sayısı / Number of Students (Dept.)	Tüm Öğrenci Ort. / Average (All Std.)	Dept. Öğrenci Ort. / Average (Dept. Std.)	Yeterliliği Sağlayan Öğrenci Sayısı (Toplam) / Number of Succ. Students (All)	Yeterliliği Sağlayan Öğrenci Sayısı (Dept.) / Number of Succ. Students (Dept.)	Yeterlilik Oranı (Toplam Öğrenci) / Success Ratio (All)	Yeterlilik Oranı (Bölüm Öğrenci) / Success Ratio (Dept.)	Performans / Performance	Yeterlilik Oranı / Success Ratio
ARCH 418 - Mesleki Uygulama / ARCH 418 - Professional Practice													
b	M1	70	60	18	18	86.01	86.01	16	16	88.89	88.89	Yeterli ✓ / Sufficient ✓	88.89
d	M1	70	60	18	18	85.50	85.50	16	16	88.89	88.89	Yeterli ✓ / Sufficient ✓	88.89
e	M1	70	60	18	18	86.06	86.06	17	17	94.44	94.44	Yeterli ✓ / Sufficient ✓	94.44
f	M1	70	60	18	18	87.51	87.51	17	17	94.44	94.44	Yeterli ✓ / Sufficient ✓	94.44
g	M1	70	60	18	18	85.19	85.19	16	16	88.89	88.89	Yeterli ✓ / Sufficient ✓	88.89
COMD 358 - Profesyonel İletişim / COMD 358 - Professional Communication													
d	M1	60	70	400	10	83.62	86.38	398	10	99.50	100.00	Yeterli ✓ / Sufficient ✓	100.00
e	M1	60	70	400	10	83.62	86.38	398	10	99.50	100.00	Yeterli ✓ / Sufficient ✓	100.00
f	M1	60	70	400	10	83.62	86.38	398	10	99.50	100.00	Yeterli ✓ / Sufficient ✓	100.00
g	M1	60	70	400	10	83.62	86.38	398	10	99.50	100.00	Yeterli ✓ / Sufficient ✓	100.00
ENG 101 - İngilizce ve Kompozisyon I / ENG 101 - English and Composition I													
c	M1	70	75	1698	59	82.20	84.73	1560	56	91.87	94.92	Yeterli ✓ / Sufficient ✓	94.92
d	M1	70	75	1698	59	82.20	84.73	1560	56	91.87	94.92	Yeterli ✓ / Sufficient ✓	94.92
e	M1	70	75	1698	59	82.20	84.73	1560	56	91.87	94.92	Yeterli ✓ / Sufficient ✓	94.92
f	M1	70	75	1698	59	82.20	84.73	1560	56	91.87	94.92	Yeterli ✓ / Sufficient ✓	94.92
g	M1	70	75	1698	59	82.20	84.73	1560	56	91.87	94.92	Yeterli ✓ / Sufficient ✓	94.92

Program Çıktısı/ Program Outcome	Yeterlilik Hesaplama Yöntemi / Method	(Ortalama) Yeterlilik Notu / Minimum Successful Grade	Yeterlilik Eşiği (%) / Threshold Percentage (%)	Toplam Öğrenci Sayısı / Number of Students (All)	Toplam Dept. Öğrenci Sayısı / Number of Students (Dept.)	Tüm Öğrenci Ort. / Average (All Std.)	Dept. Öğrenci Ort. / Average (Dept. Std.)	Yeterliliği Sağlayan Öğrenci Sayısı (Toplam) / Number of Succ. Students (All)	Yeterliliği Sağlayan Öğrenci Sayısı (Dept.) / Number of Succ. Students (Dept.)	Yeterlilik Oranı (Toplam Öğrenci) / Success Ratio (All)	Yeterlilik Oranı (Bölüm Öğrenci) / Success Ratio (Dept.)	Performans / Performance	Yeterlilik Oranı / Success Ratio
ENG 102 - İngilizce ve Kompozisyon II / ENG 102 - English and Composition II													
c	M1	70	70	543	14	85.44	88.94	526	14	96.87	100.00	Yeterli ✓ / Sufficient ✓	100.00
d	M1	70	70	543	14	85.44	88.94	526	14	96.87	100.00	Yeterli ✓ / Sufficient ✓	100.00
e	M1	70	70	543	14	85.44	88.94	526	14	96.87	100.00	Yeterli ✓ / Sufficient ✓	100.00
f	M1	70	70	543	14	85.44	88.94	526	14	96.87	100.00	Yeterli ✓ / Sufficient ✓	100.00
g	M1	70	70	543	14	85.44	88.94	526	14	96.87	100.00	Yeterli ✓ / Sufficient ✓	100.00
FA 101 - Temel Tasarım I / FA 101 - Basic Design I													
a	M3	55		192	63	60.08	65.80	118	45	61.46	71.43	Yeterli ✓ / Sufficient ✓	65.80
c	M3	55		192	63	60.08	65.80	118	45	61.46	71.43	Yeterli ✓ / Sufficient ✓	65.80
f	M3	55		192	63	60.08	65.80	118	45	61.46	71.43	Yeterli ✓ / Sufficient ✓	65.80
FA 171 - Sanat, Tasarım ve Kültüre Giriş I / FA 171 - Introduction to Art, Design and Culture I													
c	M1	50	60	399	49	75.17	78.63	379	48	94.99	97.96	Yeterli ✓ / Sufficient ✓	97.96
e	M1	50	60	399	49	75.17	78.63	379	48	94.99	97.96	Yeterli ✓ / Sufficient ✓	97.96
GE 100 - Üniversite Hayatına Giriş / GE 100 - Orientation													
f	M1	12	80	1681	63	97.14	96.83	1681	63	100.00	100.00	Yeterli ✓ / Sufficient ✓	100.00
g	M1	12	80	1681	63	97.14	96.83	1681	63	100.00	100.00	Yeterli ✓ / Sufficient ✓	100.00
h	M1	12	80	1681	63	97.14	96.83	1681	63	100.00	100.00	Yeterli ✓ / Sufficient ✓	100.00
GE 251 - Üniversite Etkinlik Programı II / GE 251 - Collegiate Activities Program II													
e	M1	70	70	838	18	93.01	94.44	776	17	92.60	94.44	Yeterli ✓ / Sufficient ✓	94.44
g	M1	70	70	838	18	93.01	94.44	776	17	92.60	94.44	Yeterli ✓ / Sufficient ✓	94.44
h	M1	70	70	838	18	93.01	94.44	776	17	92.60	94.44	Yeterli ✓ / Sufficient ✓	94.44

Program Çıktısı / Program Outcome	Yeterlilik Hesaplama Yöntemi / Method	(Ortalama) Yeterlilik Notu / Minimum Successful Grade	Yeterlilik Eşiği (%) / Threshold Percentage (%)	Toplam Öğrenci Sayısı / Number of Students (All)	Toplam Dept. Öğrenci Sayısı / Number of Students (Dept.)	Tüm Öğrenci Ort. / Average (All Std.)	Dept. Öğrenci Ort. / Average (Dept. Std.)	Yeterliliği Sağlayan Öğrenci Sayısı (Toplam) / Number of Succ. Students (All)	Yeterliliği Sağlayan Öğrenci Sayısı (Dept.) / Number of Succ. Students (Dept.)	Yeterlilik Oranı (Toplam Öğrenci) / Success Ratio (All)	Yeterlilik Oranı (Bölüm Öğrenci) / Success Ratio (Dept.)	Performans / Performance	Yeterlilik Oranı / Success Ratio
HIST 200 - Türkiye Tarihi / HIST 200 - History of Turkey													
c	M1	70	75	1055	18	93.35	92.06	1044	18	98.96	100.00	Yeterli ✓ / Sufficient ✓	100.00
d	M1	70	75	1055	18	93.35	92.06	1044	18	98.96	100.00	Yeterli ✓ / Sufficient ✓	100.00
e	M1	70	75	1055	18	93.35	92.06	1044	18	98.96	100.00	Yeterli ✓ / Sufficient ✓	100.00
f	M1	70	75	1055	18	93.35	92.06	1044	18	98.96	100.00	Yeterli ✓ / Sufficient ✓	100.00
g	M1	70	75	1055	18	93.35	92.06	1044	18	98.96	100.00	Yeterli ✓ / Sufficient ✓	100.00
HUM 111 - Kültürler, Medeniyetler ve Düşünceler I / HUM 111 - Cultures Civilizations and Ideas I													
c	M1	60	75	1110	54	83.62	80.55	1099	54	99.01	100.00	Yeterli ✓ / Sufficient ✓	100.00
e	M1	60	75	1110	54	83.62	80.55	1099	54	99.01	100.00	Yeterli ✓ / Sufficient ✓	100.00
f	M1	60	75	1110	54	83.62	80.55	1099	54	99.01	100.00	Yeterli ✓ / Sufficient ✓	100.00
HUM 112 - Kültürler, Medeniyetler ve Düşünceler II / HUM 112 - Cultures Civilizations and Ideas II													
c	M1	60	75	238	1	83.67	92.00	237	1	99.58	100.00	Yeterli ✓ / Sufficient ✓	100.00
e	M1	60	75	238	1	83.67	92.00	237	1	99.58	100.00	Yeterli ✓ / Sufficient ✓	100.00
f	M1	60	75	238	1	83.67	92.00	237	1	99.58	100.00	Yeterli ✓ / Sufficient ✓	100.00
IAED 341 - Mimari Akustik / IAED 341 - Architectural Acoustics													
a	M1	60	75	126	53	74.80	79.52	116	52	92.06	98.11	Yeterli ✓ / Sufficient ✓	98.11
b	M1	60	75	126	53	74.80	79.52	116	52	92.06	98.11	Yeterli ✓ / Sufficient ✓	98.11
c	M1	60	75	126	53	74.80	79.52	116	52	92.06	98.11	Yeterli ✓ / Sufficient ✓	98.11
g	M1	60	75	126	53	74.80	79.52	116	52	92.06	98.11	Yeterli ✓ / Sufficient ✓	98.11

Program Çıktısı / Program Outcome	Yeterlilik Hesaplama Yöntemi / Method	(Ortalama) Yeterlilik Notu / Minimum Successful Grade	Yeterlilik Eşiği (%) / Threshold Percentage (%)	Toplam Öğrenci Sayısı / Number of Students (All)	Toplam Dept. Öğrenci Sayısı / Number of Students (Dept.)	Tüm Öğrenci Ort. / Average (All Std.)	Dept. Öğrenci Ort. / Average (Dept. Std.)	Yeterliliği Sağlayan Öğrenci Sayısı (Toplam) / Number of Succ. Students (All)	Yeterliliği Sağlayan Öğrenci Sayısı (Dept.) / Number of Succ. Students (Dept.)	Yeterlilik Oranı (Toplam Öğrenci) / Success Ratio (All)	Yeterlilik Oranı (Bölüm Öğrenci) / Success Ratio (Dept.)	Performans / Performance	Yeterlilik Oranı / Success Ratio
MATH 101 - Matematik I / MATH 101 - Calculus I													
c	M1	40	50	741	58	65.46	48.90	686	38	92.58	65.52	Yeterli ✓ / Sufficient ✓	65.52
d	M1	40	50	741	58	65.46	48.90	686	38	92.58	65.52	Yeterli ✓ / Sufficient ✓	65.52
e	M1	40	50	741	58	65.46	48.90	686	38	92.58	65.52	Yeterli ✓ / Sufficient ✓	65.52
f	M1	40	50	741	58	65.46	48.90	686	38	92.58	65.52	Yeterli ✓ / Sufficient ✓	65.52
MATH 102 - Matematik II / MATH 102 - Calculus II													
c	M1	40	50	215	23	54.07	36.66	156	6	72.56	26.09	İyileştirmeye Açık! / Insufficient!	26.09
d	M1	40	50	215	23	54.07	36.66	156	6	72.56	26.09	İyileştirmeye Açık! / Insufficient!	26.09
e	M1	40	50	215	23	54.07	36.66	156	6	72.56	26.09	İyileştirmeye Açık! / Insufficient!	26.09
f	M1	40	50	215	23	54.07	36.66	156	6	72.56	26.09	İyileştirmeye Açık! / Insufficient!	26.09
PHYS 101 - Genel Fizik I / PHYS 101 - General Physics I													
a	M1	50	50	663	20	68.54	51.12	598	8	90.20	40.00	İyileştirmeye Açık! / Insufficient!	40.00
d	M1	50	50	663	20	68.54	51.12	598	8	90.20	40.00	İyileştirmeye Açık! / Insufficient!	40.00
e	M1	50	50	663	20	68.54	51.12	598	8	90.20	40.00	İyileştirmeye Açık! / Insufficient!	40.00
f	M1	50	50	663	20	68.54	51.12	598	8	90.20	40.00	İyileştirmeye Açık! / Insufficient!	40.00
TURK 101 - Türkçe I / TURK 101 - Turkish I													
c	M1	70	30	1516	42	87.68	91.08	1493	42	98.48	100.00	Yeterli ✓ / Sufficient ✓	100.00
e	M1	70	30	1516	42	87.68	91.08	1493	42	98.48	100.00	Yeterli ✓ / Sufficient ✓	100.00
g	M1	70	30	1516	42	87.68	91.08	1493	42	98.48	100.00	Yeterli ✓ / Sufficient ✓	100.00
TURK 102 - Türkçe II / TURK 102 - Turkish II													
c	M1	70	60	492	15	90.84	92.61	487	15	98.98	100.00	Yeterli ✓ / Sufficient ✓	100.00
e	M1	70	60	492	15	90.84	92.61	487	15	98.98	100.00	Yeterli ✓ / Sufficient ✓	100.00
g	M1	70	60	492	15	90.84	92.61	487	15	98.98	100.00	Yeterli ✓ / Sufficient ✓	100.00

3.3. PERFORMANS ÖLÇÜM SONUÇLARI / PERFORMANCE MEASUREMENT RESULTS

3.3.1. PROGRAM ÇIKTILARI PERFORMANS TABLOSU / PROGRAM OUTCOMES PERFORMANCE TABLE

Dersler / Courses	Program Çıktıları / Program Outcomes							
	a	b	c	d	e	f	g	h
ADA 131	✓			✓				
ADA 134	✓	✓		✓				
ADA 263	✓		✓		✓			
ARCH 201	✓	✓	✓	✓	✓	✓	✓	
ARCH 221	✓		✓	✓	✓			
ARCH 251	✓	✓	✓	✓	✓			
ARCH 301	✓	✓		✓				
ARCH 331	✓	✓	✓	✓				
ARCH 401	✓	✓	✓	✓	✓	✓	✓	
ARCH 411			✓	✓	✓	✓	✓	
ARCH 418		✓		✓	✓	✓	✓	
COMD 358				✓	✓	✓	✓	
ENG 101			✓	✓	✓	✓	✓	
ENG 102			✓	✓	✓	✓	✓	
FA 101	✓		✓			✓		
FA 171			✓		✓			
GE 100						✓	✓	✓
GE 251					✓		✓	✓
HIST 200			✓	✓	✓	✓	✓	
HUM 111			✓		✓	✓		
HUM 112			✓		✓	✓		
IAED 341	✓	✓	✓				✓	
MATH 101			✓	✓	✓	✓		
MATH 102			X	X	X	X		
PHYS 101	X			X	X	X		
TURK 101			✓		✓		✓	
TURK 102			✓		✓		✓	

Tablo.3.3.1. 2023-2024 Akademik Yılı Güz Dönemi Mimarlık Lisans Programı Program Çıktıları Performans Tablosu / Table.3.3.1. 2023-2024 Academic Year Fall Semester Architecture Undergraduate Program - Program Outcomes Performance Table

3.3.2. PROGRAM ÇIKTILARI PERFORMANS ORANLARI / PROGRAM OUTCOMES PERFORMANCE RATES

Dersler / Courses	Program Çıktıları / Program Outcomes							
	a	b	c	d	e	f	g	h
ADA 131	96.23			96.23				
ADA 134	100.00	100.00		100.00				
ADA 263	100.00		100.00		100.00			
ARCH 201	81.03	81.03	81.03	82.76	81.03	81.03	81.03	
ARCH 221	98.67		100.00	100.00	100.00			
ARCH 251	89.83	88.14	91.53	98.31	91.53			
ARCH 301	93.44	93.44		93.44				
ARCH 331	94.44	75.00	100.00	100.00				
ARCH 401	92.98	89.47	92.98	92.98	92.98	92.98	92.98	
ARCH 411			100.00	100.00	100.00	100.00	100.00	
ARCH 418		88.89		88.89	94.44	94.44	88.89	
COMD 358				100.00	100.00	100.00	100.00	
ENG 101			94.92	94.92	94.92	94.92	94.92	
ENG 102			100.00	100.00	100.00	100.00	100.00	
FA 101	65.80		65.80			65.80		
FA 171			97.96		97.96			
GE 100						100.00	100.00	100.00
GE 251					94.44		94.44	94.44
HIST 200			100.00	100.00	100.00	100.00	100.00	
HUM 111			100.00		100.00	100.00		
HUM 112			100.00		100.00	100.00		
IAED 341	98.11	98.11	98.11				98.11	
MATH 101			65.52	65.52	65.52	65.52		
MATH 102			26.09	26.09	26.09	26.09		
PHYS 101	40.00			40.00	40.00	40.00		
TURK 101			100.00		100.00		100.00	
TURK 102			100.00		100.00		100.00	

Tablo.3.3.2. 2023-2024 Akademik Yılı Güz Dönemi Mimarlık Lisans Programı Program Çıktıları Performans Oranları Tablosu / *Table.3.3.2. 2023-2024 Academic Year Fall Semester Architecture Undergraduate Program - Program Outcomes Performance Rates Table*