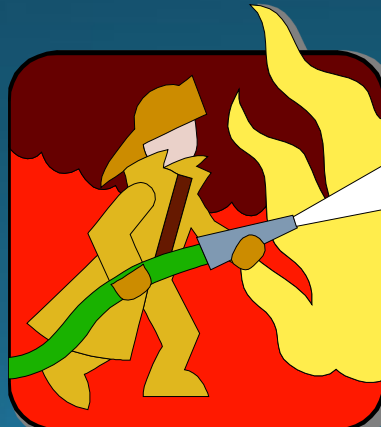


FIRE TRAINING



BILKENT UNIVERSITY
Civil Defense and Security Office



FIRE SAFETY STATUS OF THE BUILDING

- Dormitory 81 (Female Students) has a capacity of 389 beds. The building including the ground floor consists of 12 floors.
- Dormitory 82 (Male Students) has a capacity of 389 beds. The building including the ground floor consists of 8 floors.
- In case of a fire, the main entrance and exit doors of the building are used. The easiest, fastest and least dangerous evacuation routes in the building are the emergency exit doors.
- Currently, there are 3 disabled students in dormitory 81 and 4 disabled students in dormitory 82.

FIRE SAFETY STATUS OF THE BUILDING

There are 2 main entrances and 2 Emergency Exit doors in the building. In total, there are 4 fire exit routes that can be used during a fire.

FIRE SAFETY STATUS OF THE BUILDING

- There are Flashing Emergency Escape Signs, Emergency Flashing Lights, and Emergency Buttons in the hallways of the building.
- There are signs for emergency escape plans in common areas of the building (near the fire extinguishers, fire cabinets, escape route and alarm button).

FIRE SAFETY STATUS OF THE BUILDING

- There are arrow signs which direct you to the assembly area for evacuation purposes.
- In Dormitory 81, there are 45 Dry Chemical Powder Extinguishers (6 kgs each) in the building.
- In Dormitory 82, there are 36 Dry Chemical Powder Extinguishers (6 kgs each) in the building.

FIRE SAFETY STATUS OF THE BUILDING

Outside the building, there are 3 assembly areas (the side of the building facing Dormitory 77, the front of the building, the side of the building facing Dormitories Sports Hall) at a sufficient distance from any possible fire hazard, suitable for first aid evacuation which function as the 'safe area'.

DORMITORY 81-82

EMERGENCY EXIT DOORS
AND ASSEMBLY POINTS

DORMITORY 81- 82
FIRE ESCAPE – EVACUATION FROM FLOORS
12th FLOOR



DORMITORY 81-82
FIRE ESCAPE – EVACUATION FROM FLOORS
11th FLOOR



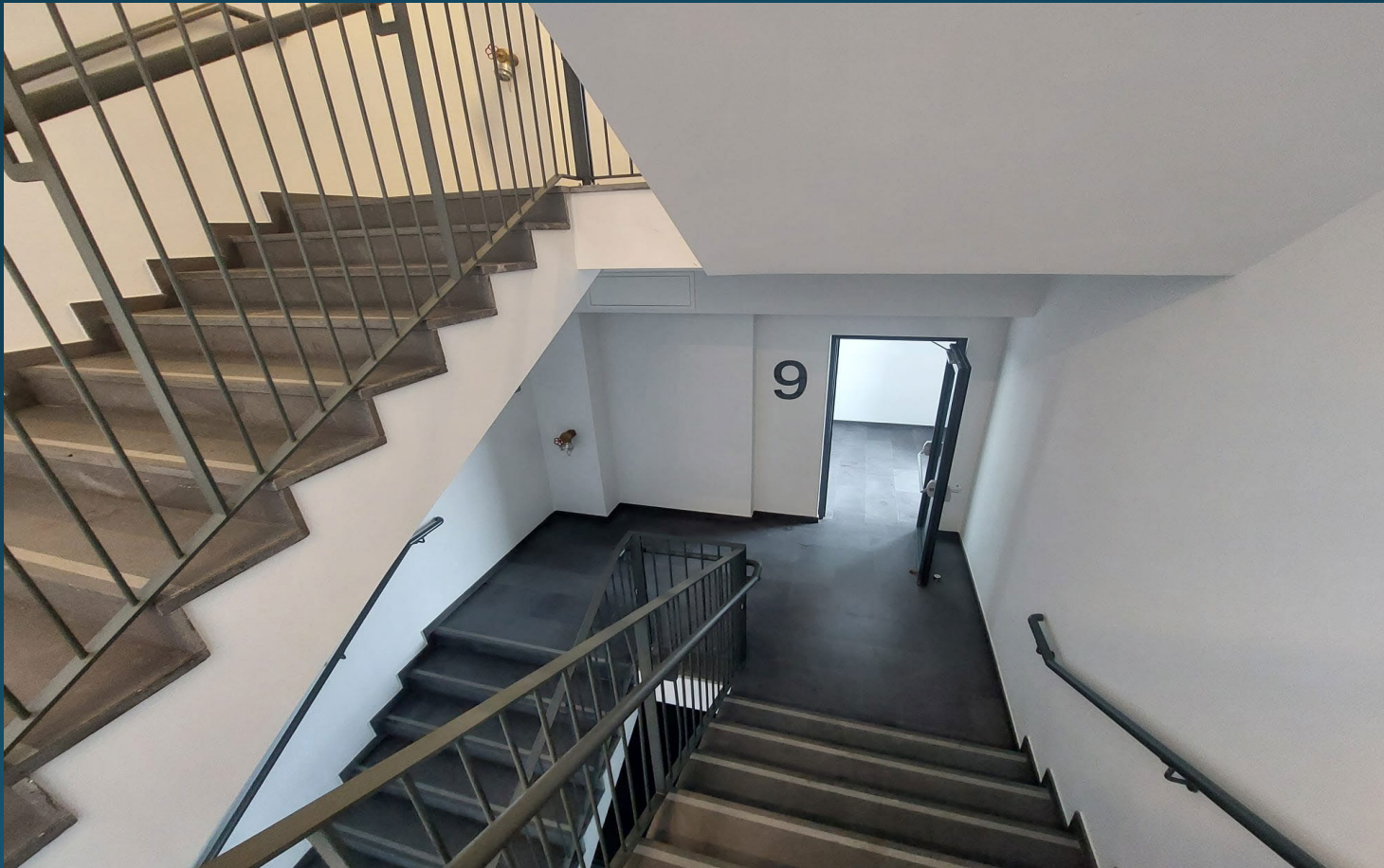
DORMITORY 81
FIRE ESCAPE – EVACUATION FROM FLOORS
10th FLOOR



DORMITORY 81
FIRE ESCAPE – EVACUATION FROM FLOORS
10th FLOOR



DORMITORY 81-82
FIRE ESCAPE – EVACUATION FROM FLOORS
9th FLOOR



DORMITORY 81-82
FIRE ESCAPE – EVACUATION FROM FLOORS
9. FLOOR



DORMITORY 81-82
FIRE ESCAPE – EVACUATION FROM FLOORS
8th FLOOR



DORMITORY 81-82
FIRE ESCAPE – EVACUATION FROM FLOORS
7th FLOOR



DORMITORY 81-82
FIRE ESCAPE – EVACUATION FROM FLOORS
7th FLOOR



DORMITORY 81-82
FIRE ESCAPE – EVACUATION FROM FLOORS
7th FLOOR



DORMITORY 81-82
FIRE ESCAPE – EVACUATION FROM FLOORS
6th FLOOR



DORMITORY 81-82
FIRE ESCAPE – EVACUATION FROM FLOORS
6th FLOOR



DORMITORY 81-82
FIRE ESCAPE – EVACUATION FROM FLOORS
5th FLOOR



DORMITORY 81-82
FIRE ESCAPE – EVACUATION FROM FLOORS
5th FLOOR



DORMITORY 81-82
FIRE ESCAPE – EVACUATION FROM FLOORS
4th FLOOR



DORMITORY 81-82
FIRE ESCAPE – EVACUATION FROM FLOORS
3rd FLOOR



DORMITORY 81-82
FIRE ESCAPE – EVACUATION FROM FLOORS
2nd FLOOR



DORMITORY 81-82
FIRE ESCAPE – EVACUATION FROM FLOORS
1st FLOOR



DORMITORY 81-82
FIRE ESCAPE – EVACUATION FROM FLOORS
1st FLOOR



DORMITORY 81-82
FIRE ESCAPE – EVACUATION FROM FLOORS
GROUND FLOOR



DORMITORY 81-82
FIRE ESCAPE – EVACUATION FROM FLOORS
1st FLOOR



DORMITORY 81-82
FIRE ESCAPE – EVACUATION FROM FLOORS
BASEMENT FLOOR



DORMITORY 81-82
FIRE ESCAPE – EVACUATION FROM FLOORS
1st FLOOR



MAIN ENTRANCE AND EXIT DOORS



ASSEMBLY POINT (THE SIDE OF THE BUILDING FACING THE DORMITORIES SPORTS HALL)



ASSEMBLY POINT (DORMITORY 75 PARKING LOT)



ASSEMBLY POINT (FRONT OF THE BUILDING)



FIRE CABINETS

Where possible fire cabinets are placed close to corridor exits and stairwell so that they can easily be seen.



FIRE SAFETY TIPS AND REMINDERS

- The first thing you need to do after you settle in the dormitory would be to learn about the emergency exit routes and assembly points of the building.
- When you see a fire, shout “Fire!“, press the fire-alarm button and immediately inform the dormitory residents and staff.
- When you smell smoke, call the Bilkent Emergency Call Center (290 6666).
- Do not keep electrical heaters, flammable and combustible materials in your room.
- Unplug electrical devices before going to bed or leaving your room.
- Do not leave any burning candles unattended in your room. Make sure you put them out before going to bed or leaving your room.

DRY CHEMICAL POWDER EXTINGUISHER



DRY CHEMICAL POWDER EXTINGUISHER

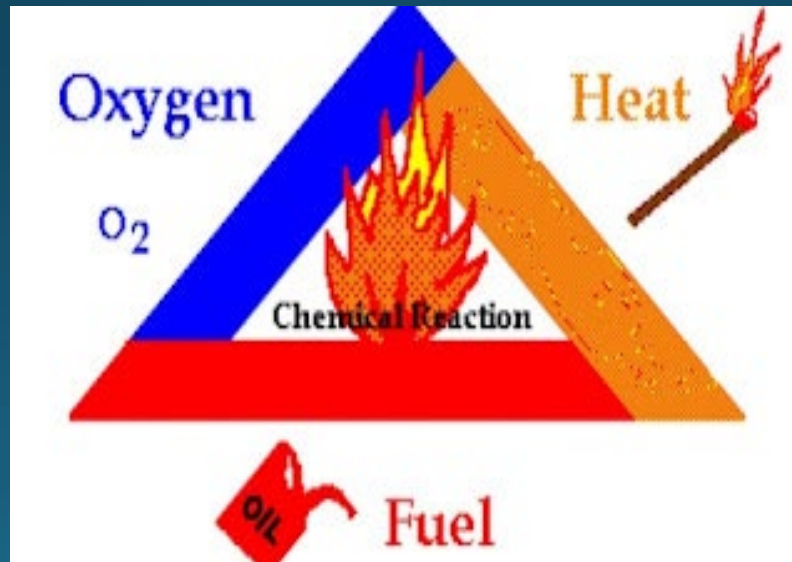
They are devices that can be used in all fires except metal and electric fires.

FIRE

GENERAL INFORMATION

FIRE TRIANGLE

There are three elements that are essential for a fire to ignite: **fuel**, **oxygen**, and **heat** (or ignition source). These three elements are often represented as the fire triangle. If one of these elements is missing, fire will not start, and if one of them is removed, fire will be extinguished.



GENERAL INFORMATION

It is everyone's responsibility to learn about fire safety and precautionary procedures.

- Fire safety can only be maintained through adherence to rules and procedures.
- Our aim is to equip students and staff with the necessary information to help guide them through the evacuation process during a fire.

GENERAL INFORMATION

- The emergency evacuation plan is planned for the safety of students and employees.
- On behalf of the University administration, Dormitory Manager is responsible for managing the entire operation.
- The first thing you need to do after you settle in the dormitory would be to learn about the emergency exit routes and the designated assembly points of the building.

GENERAL INFORMATION

It takes less than 5 minutes for a fire to spread. For this reason, a fire that can be put out with our personal skill, if unattended, can become a fire that can only be put out by trained fire staff.

GENERAL INFORMATION

What to do in case of danger

- In case of danger, press the fire alarm button.
- Never use elevators in case of fire.
- Everyone must evacuate the building when the fire alarm goes off.
- When the fire alarm goes off, never consider it as a false alarm.

GENERAL INFORMATION

Procedures and Precautionary Measures During an Emergency

- In case of fire, stop whatever you are doing and follow the signs that lead you to the emergency exits.
- Anyone who sees fire should activate the fire alarm without delay and report it to the Bilkent Emergency line by calling 290 6666.

GENERAL INFORMATION

Procedures and Precautionary Measures During an Emergency

If the fire starts at a location very close to you, if possible, check the door handle carefully.

If the door handle is hot, do not try to open the door (oxygen flow must be prevented).

In order to stop smoke spreading, use wet cloths to block up the spaces under the doors.

GENERAL INFORMATION

Procedures and Precautionary Measures During an Emergency

- If you can't leave the building, try to hang a white object over the window, so that it can be seen from a distance showing that you need help.
- If you can leave the building, go directly to the designated meeting place.
- If smoke blocks the hallways, bend down, close your mouth and nose, and try to reach the exit by crawling on the floor.

GENERAL INFORMATION

Procedures and Precautionary Measures For Other Emergency Situations

- Assist people who need help until they arrive at the designated meeting place.
- In case of a chemical spill, go to a safe place and try not to clean up any chemical stains on your clothing, instead, call the University emergency line at 290 6666 and inform them about the situation.

DUTIES OF EMERGENCY RESPONSE TEAM MEMBERS

FIRE SUPPRESSION TEAM

The team members should first try to put out the small fire in the area they are in and ensure that the fire is not spreading.

It is very important to keep calm and not to panic.

Try to put out the small fire that has just started and help people in need calmly with great care.

FIRE SUPPRESSION TEAM

- Learn the location of the fire extinguishers and fire hoses.
- Inform the technical support team about the fire and have them turn off the gas and the power supply.
- Water is not used when the cause of the fire is electricity, instead, if possible, use fire extinguishers that contain dry chemical powder or carbon dioxide.

RESCUE TEAM

- Ensure that the building is safely evacuated in the event of an emergency.
- Make sure that all doors and windows are kept closed after the evacuation.
- Keep those who should not be at the designated area away from people being evacuated.

RESCUE TEAM

- Make sure that people who are exposed to a fire or injured during evacuation have arrived safely to the place where the first aid team is located.
- During a rescue operation, priority should be given to students and staff. If possible, personal belongings and other equipment could later be rescued.

RESCUE TEAM

- The priority is given to students and employees during a rescue operation and is carried out under the supervision of the First Aid Team.
- Masks should be worn in places covered with smoke, if masks are not available, wet wipes can be used for this purpose.
- During the rescue operation, the cause of the fire is also investigated, evidence is collected. Doors and windows are kept closed to stop the oxygen flow.

RESCUE TEAM

It is very important to provide special assistance to people with disabilities during an emergency evacuation. Every member of the team should be previously trained to facilitate the safe evacuation of people with special needs.

RESCUE TEAM

- Due to the severity of the fire if there are people left behind, all emergency situation coordinators should be informed and professionals (firefighters) should be called for help.
- During the evacuation, people with disabilities shouldn't be left alone until necessary support is provided.

PROTECTION TEAM

The protection team members

- are located at the designated meeting place.
- are responsible for the safety of people at the designated meeting place following the evacuation.
- mark the safety zone with a red band.
- are responsible to protect the equipment saved from the fire and keep a record of it.

PROTECTION TEAM

- Keep the surrounding area of the building safe.
- Keep those who should not be at the designated meeting place away from people who have been evacuated.

FIRST AID TEAM

The first aid team includes people who have first aid training and work at the building. They are responsible for helping the injured and people severely affected by the fire during an emergency situation until the health center personnel arrive at the scene.

FIRST AID TEAM

- Provides first aid care until professional medical help arrives.
- During an emergency situation and evacuation the first aid team provides immediate medical assistance to the injured or people severely affected by the fire and ensures safe evacuation.

FIRE EXTINGUISHER



MANOMETER PRESSURE GAUGE

- If the pointer of the fire extinguisher pressure gauge is in the green area, it shows that the pressure of the fire extinguisher is normal, and the fire extinguisher can be used normally.
- If the pointer of the fire extinguisher pressure gauge is in the red area, it means that the pressure inside is not enough to effectively spray the fire extinguishing agent.

HOW TO USE Fire Extinguisher

Remember the **PASS** word (**P**ull - **A**im - **S**queeze - **S**weep)

P

PULL

Pull The Pin



Break Seal
and Test
Extinguisher



A

AIM

Aim At The
Base Of Fire



Ensure you
have a means
of escape



S

SQUEEZE

Squeeze the
Operating
Handle



To Operate
Extinguisher
and
Discharge the
Agent



S

SWEEP

Sweep From
Side to Side



Completely
Extinguish
the Fire

